

How To:

Setup Automatic Daylight Saving Time...

Step-By-Step

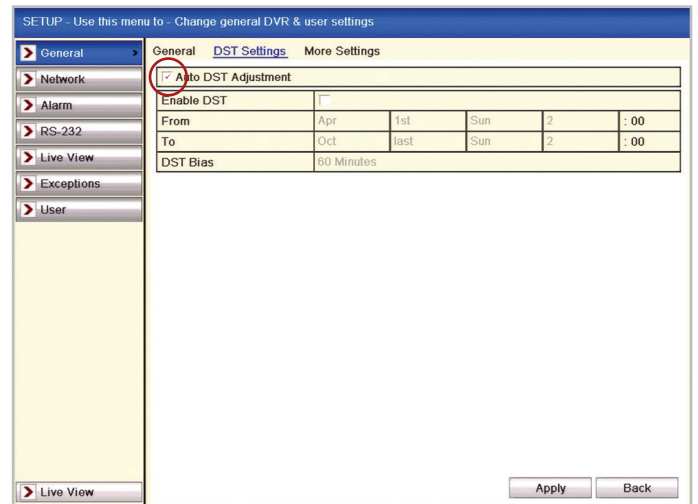
Don't forget when the clocks change twice a year you will need to ensure that the date and time on your AlienDVRs are correct, the easiest and quickest way to do this is to set up Automatic Daylight Saving Time:

- 1 From the main menu enter the 'Setup' menu.
- 2 Choose "General Settings".
- 3 Choose "DST Settings" tab.
- 4 You can click the checkbox before the Auto DST Adjustment item.
- 5 Alternatively you can manually check the **Enable DST** checkbox and then you choose the dates of the DST period.

Details on setting up the Automatic Daylight Saving Time Adjustment can also be found in the AlienHero Manual.



Select "SetUp" on the BlueDisc Menu



General > DST Settings > Auto DST Adjustment > Apply

Please Note

These "Technical Tips" help sheets aim to answer commonly asked questions in a concise and informative manner - they are for advice & guidance only and do not replace any of the manuals or other literature supplied with our products.

Last edited:
23/10/2014